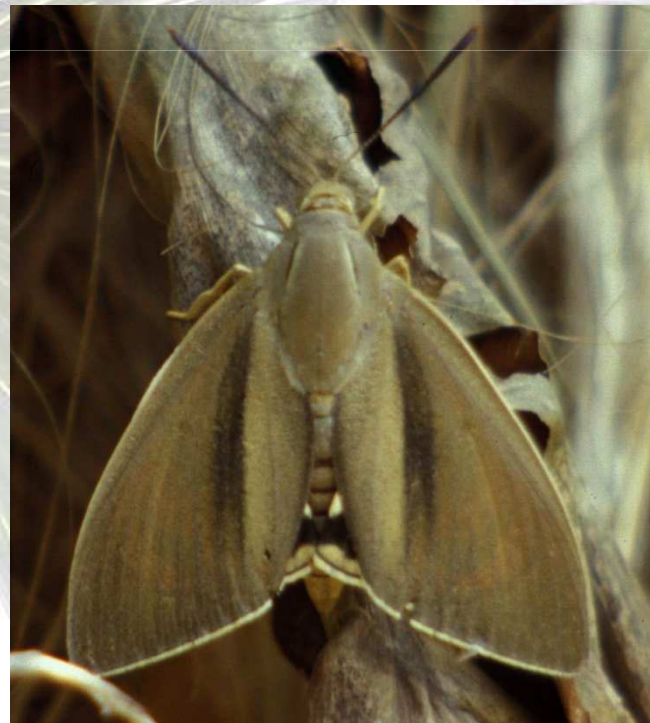
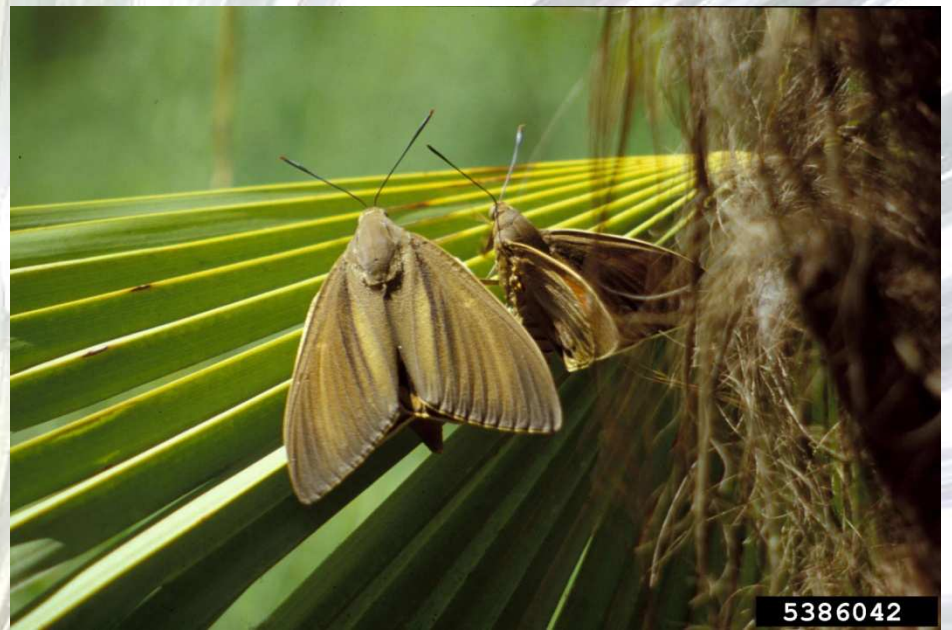


A low-angle photograph of a palm frond, showing the central stem and numerous long, narrow leaflets radiating outwards. The frond is dark green and appears to be part of a larger tree. The background is a pale, overcast sky. Overlaid on the image is the text 'paysandisia archon' in a large, orange, sans-serif font, and below it, 'Il Castnide delle palme' in a smaller, orange, sans-serif font.

paysandisia archon
Il Castnide delle palme







LEPIDOTTERO
Castniide

Originario del Sud America

**Primi ritrovamenti : Spagna e Francia nel 2001
successivamente in Gran Bretagna, Grecia, Cipro e Italia**

Italia: Sicilia, Puglia, Toscana, Marche, Veneto e Lazio

The background of the slide is a close-up, low-angle shot of a palm frond. The frond is composed of many long, narrow, green leaflets that radiate from a central point, creating a fan-like pattern. The lighting is bright, causing some of the leaflets to appear slightly washed out or overexposed, particularly towards the edges. The overall color palette is dominated by various shades of green, from light lime to a darker, more saturated green.

PIANTE OSPITI

Brahea

Butia

Chamaerops

Jubaea

Livistona

Phoenix

Sabal

Syagrus

Trachycarpus

Trithrinax

Washingthonia









5386050



5386045





5386044



5386032